



INDIAN INSTITUTE OF TECHNOLOGY- (IIT) MANDI,  
Himachal Pradesh -175005, India

SCHOOL OF COMPUTING AND ELECTRICAL ENGINEERING (SCEE)

# M.TECH - VLSI

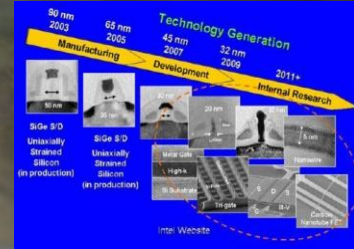
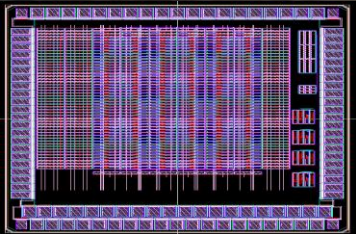
M.Tech: Very Large Scale Integration (VLSI)

To Mentor students: VLSI Design & Technology

Materials to Devices

for

SEMICONDUCTOR: INDUSTRY & ACADEMIA



## CHIP DESIGNING TOOLS:

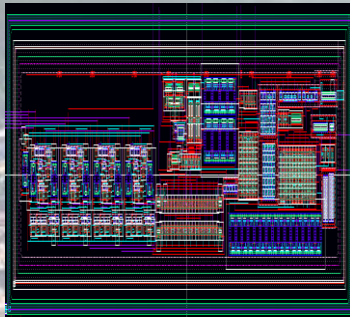
## ELIGIBILITY:

- CADENCE
- MENTOR GRAPHICS
- SYNOPSIS
- SILVACO
- CENTAURUS
- COMSOL
- XILINX

BE/B. Tech. (EE/EEE/ECE/IN)/M.Sc. (Electronics Science)

&

Valid Gate Score



## IMPORTANT DATES:

- Start of online application: April 03, 2018
- Last date for application: April 19, 2018
- Date of interview: May 12, 2018
- Notification of Shortlisted Candidates: April 23, 2018

## FABRICATION TOOLS:

## CHARACTERIZATION TOOLS

- **Clean Rooms:** Class 100 and above
- **Lithography:** Optical UV/DUV, MASKLESS & EBL.
- **Thin Film Deposition Systems:** Atomic Layer Deposition (ALD), RF/DC Sputtering, Chemical Vapor Deposition (CVD), Thermal Evaporator, Spin Coater.
- **Annealing Systems:** Three - Zone Furnace, Oxidation/Diffusion Furnace.

- **Electrical:** Keithley SCS 4200
- **Surface morphology:** Atomic Force Microscopy (AFM), Field Emission Scanning Electron Microscopy (FE-SEM), High-Resolution Transmission Electron Microscopy (HR-TEM).
- **Material:** X-Ray Diffractometer (XRD), Raman, X-ray photoelectron spectroscopy (XPS).
- **Thickness:** Stylus Profilometer, Ellipsometer, Optical Profilometer, Optical Microscope.

