



# INDIAN INSTITUTE OF TECHNOLOGY MANDI

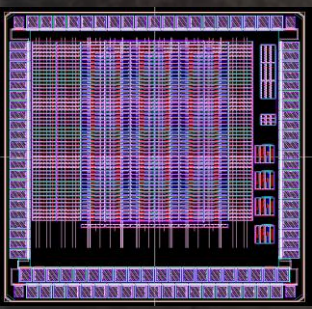
Himachal Pradesh -175005, India

## SCHOOL OF COMPUTING AND ELECTRICAL ENGINEERING (SCEE)

# M.TECH - EE (VLSI)

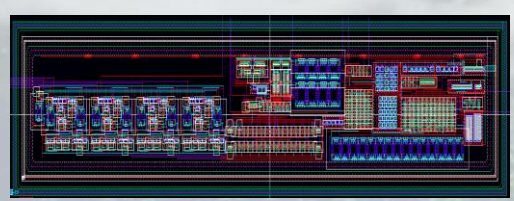
**M.Tech: Electrical Engineering, Specialization ( Very Large Scale Integration )**

To Mentor students: VLSI Design & Technology



### CHIP DESIGNING TOOLS:

- Keysight ADS
- CADENCE
- MENTOR GRAPHICS
- SYNOPSIS
- SILVACO
- SENTAURUS
- COMSOL
- XILINX



### ELIGIBILITY:

BE/B. Tech. (EE/EEE/ECE/IN)/M.Sc. (Electronics Science)  
& Valid GATE Score ( EE/ECE/IN )

### IMPORTANT DATES:

- Start of online application: March 21, 2017
- Last date for application: April 18, 2017
- Date of Interview: May 13, 2017
- Apply online at: <http://oas.iitmandi.ac.in/admission>

### FABRICATION TOOLS:

- **Clean Rooms:** Class 100 and above
- **Lithography:** Optical UV/DUV, MASKLESS & EBL.
- **Thin Film Deposition Systems:** Atomic Layer Deposition (ALD), RF/DC Sputtering, Chemical Vapor Deposition (CVD), Thermal Evaporator, Spin Coater.
- **Annealing Systems:** Three - Zone Furnace, Oxidation/Diffusion Furnace.

### CHARACTERIZATION TOOLS

- **Electrical:** Keithley SCS 4200
- **Surface morphology:** Atomic Force Microscopy (AFM), Field Emission Scanning Electron Microscopy (FE-SEM), High-Resolution Transmission Electron Microscopy (HR-TEM).
- **Material:** X-Ray Diffractometer (XRD), Raman, X-ray photoelectron spectroscopy (XPS).
- **Thickness:** Stylus Profilometer, Ellipsometer, Optical Profilometer, Optical Microscope.

