



No: IIT Mandi(CW)/SE-1104/2020-21/1290-91

Dated: 02-07-2020

### NOTICE INVITING QUOTATION

Quotations for the work "**Construction of storage shed near Environmental Engineering Lab at North Campus of IIT Mandi H.P.**" as per schedule attached is hereby invited by the undersigned from registered contractors/ firms up to **09-07-2020 by 03:00 PM** and shall be opened on the same day at **03:30 PM** in the O/o Superintending Engineer, IIT Mandi at Kamand campus in the presence of intending contractor or their authorized representatives.

#### Terms & Conditions:-

1. The work will be carried out as per CPWD General Specifications for both **Civil and Electrical works** amended up to date & as per the instructions of the Engineer-in-charge.
2. The work is of urgent nature and is to be completed immediately within **40 days** after issue of work order.
3. All damages done during execution of the work is to be made good by the contractor and nothing extra will be paid separately for the same.
4. The Prices quoted should be inclusive of all taxes.
5. Contractor shall abide by labour rules and regulations.
6. All the applicable taxes shall be deducted from bill.
7. Compensation of delay of work will @ 0.05% per day on account of non-completion of work within stipulated period.
8. All material to be used on the work will have to be got approved from the Engineer-in-charge/faculty.
9. Certificate of enlistment with Central/State Govt. Organization/Central Autonomous body/Central Public Sector Undertaking should also be attached with NIQ.
10. GST Registration Certificate should also be attached with NIQ.

Sd/-

Superintending Engineer

Copy to:-

1. Notice board.
2. Institute website

Sd/-

Superintending Engineer

## Schedule of Quantity

Name of work : - Construction of storage shed near Environmental Engineering Lab at North Campus of IIT Mandi H.P

Sr. No.	Description of items	Qty.	Unit	Rate (in Rs)		Amount (in Rs)
				(in figures)	(in words)	
<b>Civil Items:-</b>						
1	Excavating holes more than 0.10 cum & upto 0.5 cum including getting out the excavated soil, then returning the soil as required in layers not exceeding 20cm in depth, including consolidating each deposited layer by ramming, watering etc, disposing of surplus excavated soil, as directed in all lead and lift for all kinds of soil as per entire satisfaction and direction of Engineer -in-charge	10.00	each			
2	Providing and laying in position cement concrete of specified grade excluding the cost of centering and shuttering - All work up to plinth level : 1:2:4 (1 cement : 2 coarse sand (zone-III) : 4 graded stone aggregate 20 mm nominal size) as per entire satisfaction and direction of Engineer -in-charge	2.84	cum			
3	Structural steel work riveted, bolted or welded in built up sections, trusses and framed work, including cutting, hoisting, fixing in position and applying a priming coat of approved steel primer all complete as per entire satisfaction and direction of Engineer -in-charge	800.62	kg			
4	Providing and fixing aluminium work for doors, windows, ventilators and partitions with extruded built up standard tubular sections/ appropriate Z sections and other sections of approved make conforming to IS: 733 and IS: 1285, fixing with dash fasteners of required dia and size, including necessary filling up the gaps at junctions, i.e. at top, bottom and sides with required EPDM rubber/ neoprene gasket etc. Aluminium sections shall be smooth, rust free, straight, mitred and jointed mechanically wherever required including cleat angle, Aluminium snap beading for glazing / paneling, C.P. brass / stainless steel screws, all complete as per architectural drawings and the directions of Engineer-in-charge. (Glazing, paneling and dash fasteners to be paid for separately) : For fixed portion Powder coated aluminium (minimum thickness of powder coating 50 micron) as per entire satisfaction and direction of Engineer -in-charge	10.65	kg			
5	Providing and fixing aluminium work for doors, windows, ventilators and partitions with extruded built up standard tubular sections/ appropriate Z sections and other sections of approved make conforming to IS: 733 and IS: 1285, fixing with dash fasteners of required dia and size, including necessary filling up the gaps at junctions, i.e. at top, bottom and sides with required EPDM rubber/ neoprene gasket etc. Aluminium sections shall be smooth, rust free, straight, mitred and jointed mechanically wherever required including cleat angle, Aluminium snap beading for glazing / paneling, C.P. brass / stainless steel screws, all complete as per architectural drawings and the directions of Engineer-in-charge. (Glazing, paneling and dash fasteners to be paid for separately) :For shutters of doors, windows & ventilators including providing and fixing hinges/ pivots and making provision for fixing of fittings wherever required including the cost of EPDM rubber / neoprene gasket required (Fittings shall be paid for separately) Powder coated aluminium (minimum thickness of powder coating 50 micron) as per entire satisfaction and direction of Engineer -in-charge	18.98	kg			
6	Painting with synthetic enamel paint of approved brand and manufacture to give an even shade : Two or more coats on new work as per entire satisfaction and direction of Engineer -in-charge	28.93	sqm			

Sr. No.	Description of items	Qty.	Unit	(in figures)	(in words)	Amount (in Rs)
7	Providing and fixing 12 mm thick prelaminated particle board flat pressed three layer or graded wood particle board conforming to IS: 12823 Grade I Type II, in panelling fixed in aluminum doors, windows shutters and partition frames with C.P. brass / stainless steel screws etc. complete as per architectural drawings and directions of engineer-in-charge. Pre-laminated particle board with decorative lamination on one side and balancing lamination on other side as per entire satisfaction and direction of Engineer -in-charge	0.81	sqm			
8	Providing and fixing glazing in aluminium door, window, ventilator shutters and partitions etc. with EPDM rubber / neoprene gasket etc. complete as per the architectural drawings and the directions of engineer-in-charge . (Cost of aluminium snap beading shall be paid in basic item): With float glass panes of 5 mm thickness (weight not less than 12.50 kg/ sqm) as per entire satisfaction and direction of Engineer -in-charge	0.90	sqm			
9	Providing & fixing glass panes with putty and glazing clips in steel doors, windows, clerestory windows, all complete with : 5.5 mm thick glass panes as per entire satisfaction and direction of Engineer -in-charge	4.32	sqm			
10	Providing and fixing ISI marked oxidised M.S. handles conforming to IS:4992 with necessary screws etc. complete : 125 mm as per entire satisfaction and direction of Engineer -in-charge	14.00	each			
11	Providing and fixing ISI marked oxidised M.S. tower bolt black finish, (Barrel type) with necessary screws etc. complete : 250x10 mm as per entire satisfaction and direction of Engineer -in-charge	24.00	each			
12	Providing and fixing ISI marked oxidised M.S. sliding door bolts with nuts and screws etc. complete : 250x16 mm as per entire satisfaction and direction of Engineer -in-charge	1.00	each			
13	Providing and fixing pre-coated galvanised iron profile sheets (size, shape and pitch of corrugation as approved by Engineer-in-charge) 0.50 mm (+ 0.05 %) total coated thickness with zinc coating 120 grams per sqm as per IS: 277, in 240 mpa steel grade, 5-7 microns epoxy primer on both side of the sheet and polyester top coat 15-18 microns. Sheet should have protective guard film of 25 microns minimum to avoid scratches during transportation and should be supplied in single length upto 12 metre or as desired by Engineer-in-charge. The sheet shall be fixed using self drilling /self tapping screws of size (5.5x 55 mm) with EPDM seal, complete upto any pitch in horizontal/ vertical or curved surfaces, excluding the cost of purlins, rafters and trusses and including cutting to size and shape wherever required as per entire satisfaction and direction of Engineer -in-charge	73.41	sqm			
14	Providing and fixing bright finished brass hard drawn hooks and eyes :300 mm as per entire satisfaction and direction of Engineer -in-charge	6.00	each			
15	Providing & fixing fly proof wire gauze to windows, clerestory windows & doors with M.S. Flat 15x3 mm and nuts & bolts complete. Galvanised M.S. Wire gauze with 0.63 mm dia wire and 1.4 mm aperture on both sides as per entire satisfaction and direction of Engineer -in-charge	4.32	sqm			
<b>Electrical Items:-</b>						
16	Wiring for light point/ fan point/ exhaust fan point/ call bell point with 1.5 sq.mm FRLS PVC insulated copper conductor single core cable in surface / recessed medium class PVC conduit, with modular switch, modular plate, suitable PVC box and earthing the point with 1.5 sq.mm FRLS PVC insulated copper conductor single core cable etc as required as per entire satisfaction and direction of Engineer -in-charge	3	Point			
17	Wiring for circuit/ submain wiring alongwith earth wire with the following sizes of FRLS PVC insulated copper conductor, single core cable in surface/ recessed medium class PVC conduit as required. 2 X 2.5 sq. mm + 1 X 2.5 sq. mm earth wire as per entire satisfaction and direction of Engineer -in-charge	5	Metre			

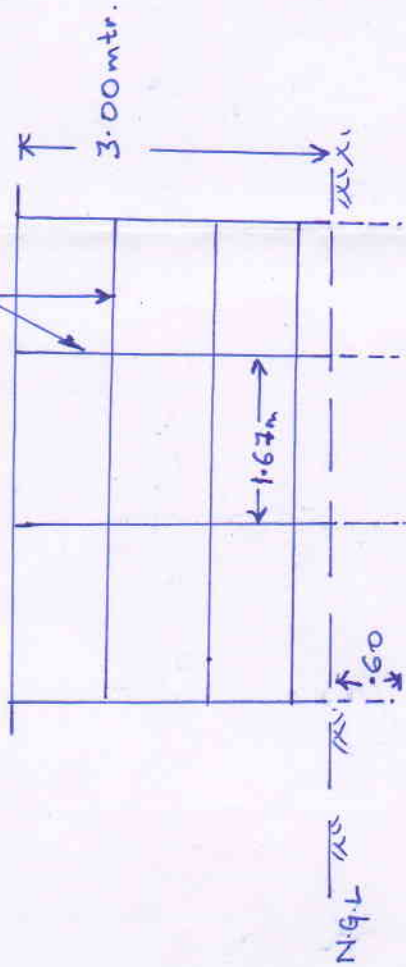
Sr. No.	Description of items	Qty.	Unit	(in figures)	(in words)	Amount (in Rs)
18	Wiring for circuit/ submain wiring alongwith earth wire with the following sizes of FRLS PVC insulated copper conductor, single core cable in surface/ recessed medium class PVC conduit as required. 2 X 4 sq. mm + 1 X 4 sq. mm earth wire as per entire satisfaction and direction of Engineer -in-charge	30	Metre			
19	Supplying and fixing 5/6 amp switch modular on the existing modular plate & switch box including connections but excluding modular plate etc. as required as per entire satisfaction and direction of Engineer -in-charge	2	Each			
20	Supplying and fixing 3 pin 5/6 A socket outlet modular on the existing modular plate & switch box including connections but excluding modular plate etc. as required as per entire satisfaction and direction of Engineer -in-charge	2	Each			
21	Supplying and fixing 15/16 amp switch modular on the existing modular plate & switch box including connections but excluding modular plate etc as per entire satisfaction and direction of Engineer -in-charge	1	Each			
22	Supplying and fixing 6 pin 15/16 amp socket outlet modular on the existing modular plate & switch box including connections but excluding modular plate etc as per entire satisfaction and direction of Engineer -in-charge	1	Each			
23	Supplying and fixing 3 Module (100mmX75mm), GI box along with modular base & cover plate for modular switches in recess etc as required.	3	Each			
24	Supplying and fixing 5 amps to 32 amps rating, 240/415 volts, "C" curve, miniature circuit breaker suitable for inductive load of Single pole, in the existing MCB DB complete with connections, testing and commissioning etc. as required as per entire satisfaction and direction of Engineer -in-charge	4	Each			
25	Supplying and fixing 06 way , Double door, single pole and neutral, sheet steel, MCB distribution board, 240 V, on surface/ recess, complete with tinned copper bus bar, neutral bus bar, earth bar, din bar, interconnections, powder painted including earthing etc. as required. (But without MCB/RCCB/Isolator) as per entire satisfaction and direction of Engineer -in-charge	1	Each			
26	Supplying and fixing 40 A rating, double pole, 240 V, isolator in the existing MCB DB complete with connections, testing and commissioning etc. as required as per entire satisfaction and direction of Engineer -in-charge	1	Each			
27	Supplying, installation, testing and commissioning of 300 mm exhaust fan metal body with all accessories as per entire satisfaction and direction of Engineer -in-charge	1	Each			
28	Supplying, installation, testing and commissioning of decorative ultra slim LED lighting fixture with co extruded polycarbonate body, environmental friendly, energy efficient 20 watt LED 6500K luminaries as per entire satisfaction and direction of Engineer -in-charge	2	Each			
<b>Total</b>						

**Note:-**

1. Quoted rate should be inclusive of all applicable taxes including GST (nothing extra shall be payable).
2. All statutory deduction will be made as per prevailing rates.

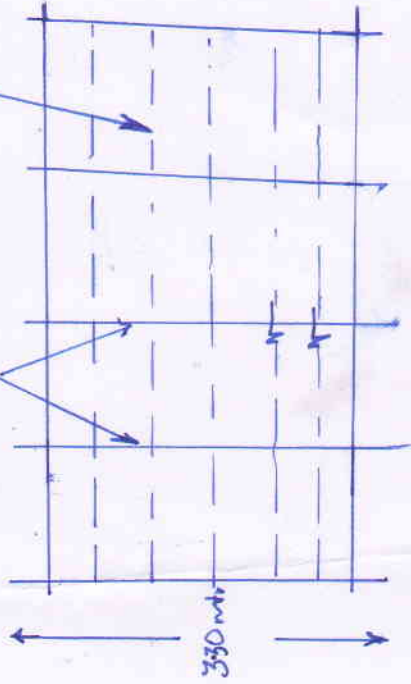
Sd/-  
Superintending Engineer

M.S angle. (50x50x6mm)



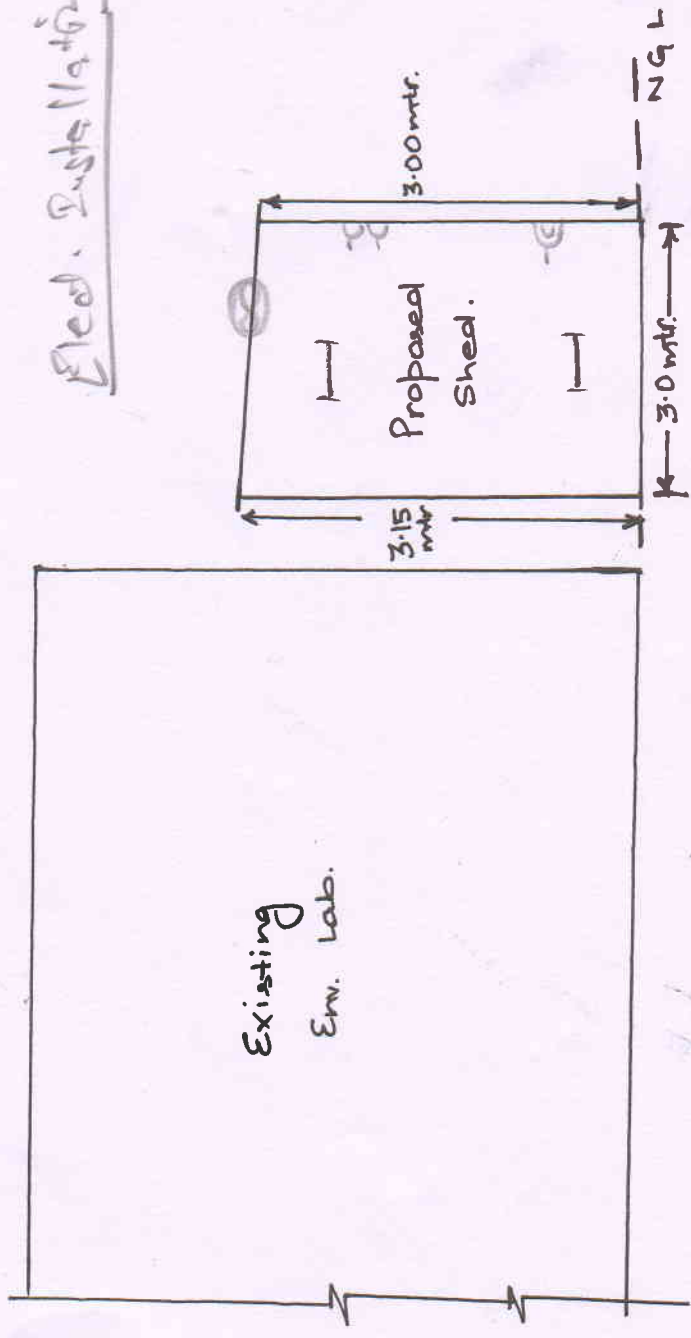
(WALL)

Rafters. (50x50x6)  
Purlins (ISA 40x40x6)



(Roof)

Eled. Dist. Nation



SECTION

# Plan For Proposed Expansion Structures



Already Constructed Structures

Proposed Structures

Note :- All Dimensions are in Meter